

Electronic humidistat EH4



- Two step humidistat with fast response sensor
- Two independent volt-free control relays
- Visible "High RH" alarm
- Possible to use also for humidification

Two closing contacts: Two independently programmable relays with adjustable hysteresis. Possible to use for both dehumidification and humidification. Suitable for Hi/Lo/Off control of one unit, On/Off control of two separate unit or On/Off control of one unit plus remote high/low RH alarm.

Display and diodes: High visibility RH display (15 mm). Neon lamps indicate relay operation. Display flashes if 'High RH' set point is exceeded.

Sensor: Honeywell fast response capacitive type moisture sensor. Factory calibrated (accuracy $< \pm 2\%RH$).

Optional: available for wall or duct mounting.



EH4 and standard room sensor IP65.
Room sensor: low voltage 3 m.
Optional: 25 m low voltage RJ9 extension cable (50 m maximum)

Option: External display. Display and key set via a 25 m low voltage RJ9 cable.



Display: low voltage RJ9 cable, standard 25 m. Optional extension kit, (200 m max)



Relay: 230V supply

Option: duct sensor, IP-65



World leaders in dehumidification.

EH4 BOX

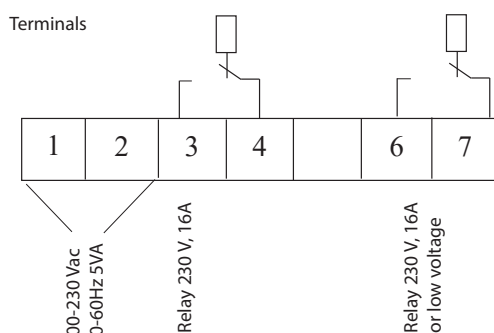
Dimensions:	Height: 100 mm, depth: 60 mm, width: 100 mm.
Display:	1 row LED.
Programming:	Four push-buttons for programming.
Protection Class:	IP44.
Weight:	0.6 kg.
Mounting:	4 screw holes, Ø4 mm, towards the wall.
Option:	Separate display box with 25 m or 50 m low voltage cable. IP65 duct sensor can also be mounted on wall. Cable with amphenol plug to control single phase dehumidifier. combined with supply to the EH4.

SENSOR

Measuring range:	0-99%RH (non condensing).
Accuracy:	<±2%RH in the full measuring range.
Response time:	At low air speed, 30 second.
Mounting:	Wall assembly.
Sensor type:	Room sensor, 3 m sensor cable.
Protection class:	IP 65 (housing).
Option:	Ductsensor. Insertion length is 65 mm, Ø13 mm.

CONNECTIONS & PROGRAMMING

2 separate relays:	Potential free, max 230Vac 16A each.
Visual alarm:	Display starts blinking when set value is reached.
Cable size:	Maximum 1x1.5 mm 2 per terminal.
Supply:	230Vac standard, 115Vac also available, 50-60 Hz (cable not included).



Remote display option



Display cable

Sensor cable

25 m low voltage RJ9 cable to display from relay box.
230 V supply to relay box. 3 m sensor cable from relay box

Panel-mounted EH4 in RL-71R



EH4 plus room sensor mounted on DR-010B



Updated 19.04



Sweden | +46 8 445 77 20
info@dst-sg.com | www.dst-sg.com



United Kingdom | +44 1422 312562
enquiries@dsthumiditycontrol.co.uk
www.dsthumiditycontrol.co.uk